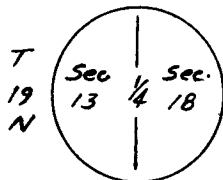


CERTIFIED LAND CORNER RECORDATION

R 70 W | R 69 W



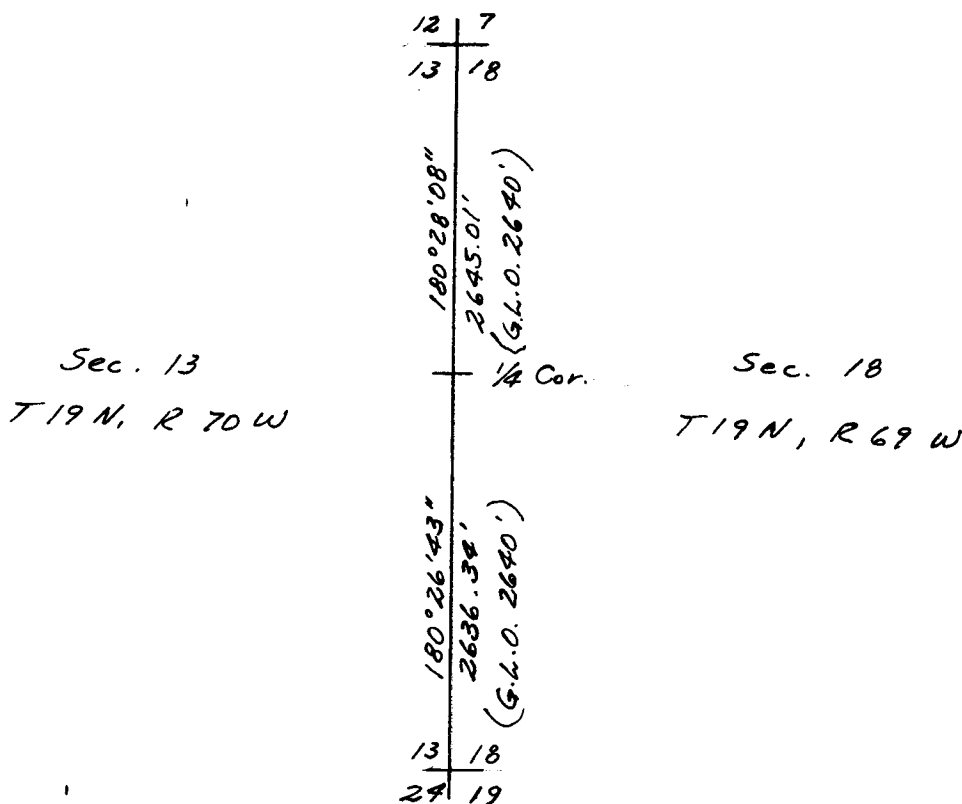
DESCRIPTION OF CORNER EVIDENCE FOUND, AND ORIGINAL RECORD (If known)

Found well set stone 14" x 4" standing 16" above ground with 1/4 mark well defined in west (14") face. Original Monument described as a sandstone 20" x 13" x 4".

DESCRIPTION OF MONUMENT AND ACCESSORIES ESTABLISHED TO PERPETUATE THE ORIGINAL LOCATION OF THIS CORNER:

Set a No. 5 Rebar at west face of stone as Corner Monument. Left stone in place as reference Monument.

SKETCH, WITH COURSE AND DISTANCE TO ADJACENT CORNER IF DETERMINED IN THIS SURVEY. (May Sketch or Paste Reproduction on Reverse Side.)



I, Edward C. Fry certify that I have carefully performed ~~or reviewed~~ the work done on the diagrammed corner as reported on this recordation form and approve the same.

Edward C. Fry Signature of Surveyor P.E./L.S. 662 Registration No.

STATE OF WYOMING,

Office of Clerk and Recorder,

County of Parson

594253

This "corner record" was filed for record on the 2 day of OCT 2 1980, 1980, was noted on the cross-index plat and is assigned page No.         , in book No.         .

Janet C. Whitehead  
County Official

	Cross Index No. <u>        </u>	T. <u>        </u>	R. <u>        </u>	Mer. <u>        </u>
Photographed.....	<u>21</u>	T. <u>19</u>	R. <u>69</u>	Mer. <u>        </u>
Indexed.....	_____	T. _____	R. _____	Mer. _____
Posted.....	_____	T. _____	R. _____	Mer. _____
Assessor.....	_____	T. _____	R. _____	Mer. _____